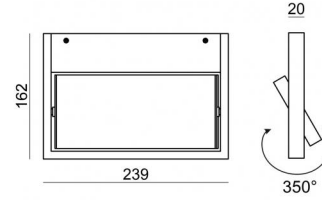
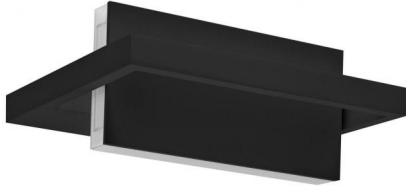


Tablet_W1



Wall Lights | 220-240 V
56 topLED 14 W DC - 15 W AC | CRI 90
7609



Technical data	
Construction year	2016
Type	Surface
Installation position	Wall lights
Installation environment	Indoor
Light Source	LED
Optics	General Lighting
Light emission direction	upward
Power	14 W
Source lumens	1826 lm
Frequency	50 - 60 Hz
CCT / Tone	3000 K
Colour rendering index	90 Ra
C.C. / C.V.	AC
Safety class	1
IP	IP40
Glow wire test	850°
Direct mounting on normally flammable surfaces	Yes
CE	Yes
Driver included	Driver
Dimmable article	No
Directional	Swivelling
total angle (vertical plane)	0 °
total angle (horizontal plane)	350 °
Tilting	No
Walk-over	No
Drive-over	No
Cable included	No
Resin potting	No
Type of light emission	Single emission
Net weight	1.048 Kg
Electrostatic discharge protection	No
Surge protection	No

Finishing casing	
Material	Aluminium
Colour	Embossed black RAL 9005
Processing	Coating
Finishing diffuser	
Material	PC
Processing	Sandblasting



Wall Lights | 220-240 V | 56 topLED 14 W DC - 15 W AC | CRI 90 | Base 7609

Single emission wall lights for indoor application. The warm white LED light source with a general lighting light distribution is composed of 56 topped LEDs with CCT of 3000 K and a CRI 90; the source luminous flux is 1826 lm, with a 130.4 lm/W nominal luminous efficacy.

The device body is made of aluminium and features a embossed black ral 9005 finish, processed by means of coating; the diffuser is made of PC with a sandblasting treatment. The ingress protection degree is IP40; the total weight is of 1.048 kg.

The total absorbed power is 15 W.

The device features protection class I and can be wall lights-mounted.

Compliant with the EN 60598-1 standard and its specific provisions.

Energy efficiency class

This product contains a light source of energy efficiency class E.

Illuminotechnical Features

Light Output Ratio (LOR)	64 %
Source lumens	1826 lm
Delivered lumens	1169 lm
Consumption	15 W
Luminaire efficacy	77 lm/W
Colour temperature	3000 K
Standard Deviation of Colour Matching	3 Step MacAdam
Colour rendering index	90 Ra
Junction temperature (lighting fixture)	80
Standard Operating Ambient Temperature	25

LED Life / Failure Ratio

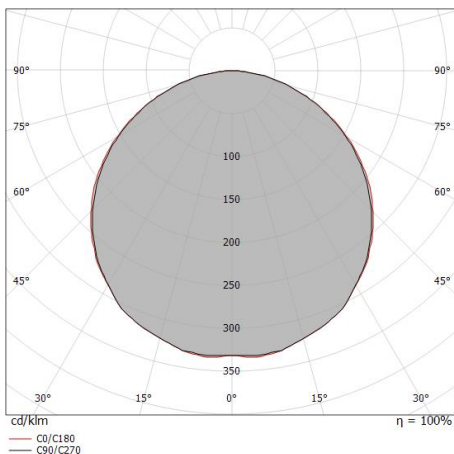
L70 B20 C0 72500h

UGR

UGR axial	26.8
UGR transversal	26.8
X=4H Y=8H	S=0.25H
Reflection factor	70/50/20

OPTICAL

Light distribution symmetry	Symmetrical
C0/C180 optics	115°



Distance [m]	Cone diameter [m]	E(0°)	E(C90)	E(C0)
0.5	1.56 1.59	1460	115	112
1.0	3.13 3.18	365	29	28
1.5	4.69 4.76	162	13	12
2.0	6.25 6.35	91	7	7
2.5	7.82 7.94	58	5	4
3.0	9.38 9.53	41	3	3

Distance [m] Cone diameter [m] Illuminance [lx]

— C0/C180 (Half-peak divergence: 115.6°)
— C90/C270 (Half-peak divergence: 114.8°)



Bracket

L=239mm, H=5mm, D=50mm.

Material:Aluminium, colour:Embossed black RAL 9005,
processing:Coating.

Finish

Black

Code

KIT0042